



autism
west midlands



World
Acceptance

Autism

Month
April 2026

Everything your school needs to take part in World Autism Acceptance Month

This information pack offers fun, color-themed ideas to help your school raise funds for our World Autism Acceptance Month campaign.

We understand how busy things can get during this time of year, but with a little planning and creativity -you can easily organise a simple fundraising activity while incorporating your Autism Education Trust school resources!

School activities inspiration:



Rainbow non-school uniform day



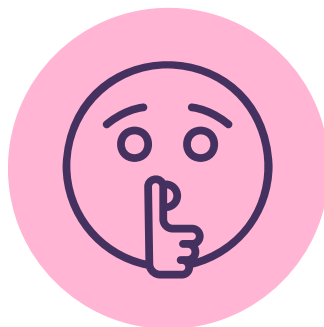
Colourful cake sale



School art exhibition



End of term school colour disco



Sponsored Silence



Guess the Sweets in the Jar

What is World Autism Acceptance Month?

World Autism Acceptance Month is a month dedicated to raising awareness, fostering acceptance, and celebrating the strengths of autistic people. It's an opportunity for communities, schools, workplaces, and families to come together to promote understanding and create a more inclusive society!

At Autism West Midlands, we have a range exciting things happening across the month. Make sure to keep an eye on our social media pages and website.

Throughout the month, we'll be sharing stories from across the charity with everyone's celebrations, so be sure to tag your posts with **#WAAM26** & **#WorldAutismAcceptanceMonth**

Why should your school fundraise for World Autism Acceptance Month?

Fundraise to help improve education for young autistic people.

Fundraise to support parents/carers of autistic children.

Fundraise to create more inclusive social opportunities for autistic adults.

Top tips for reaching your target

- **Set a realistic fundraising goal and share it with your school community. Keep everyone updated on your progress through school communications.**
- **Explain why you're supporting World Autism Acceptance Month and how the funds will make a difference—find all the key information here.**
- **Celebrate your success and show appreciation to everyone who contributed. A heartfelt thank-you can even inspire additional donations!**

How to pay in the money you raise

By Post: If you would like to pay individual donations via post, cheques should be made payable to 'Autism West Midlands' & sent to:

**Autism West Midlands, Sense TouchBase Pears,
750 Bristol Rd, Selly Oak, Birmingham, B29 6NA.**

Online: If you set up an online fundraising page on JustGiving to raise money, then you don't need to do anything further. The funds from your page will come directly to us!

How your fundraising helps

£10

Could pay for an autistic child to attend a stay and play session. These sessions give children the chance to do what they do best – play.

£15

Is what it costs to run our Information Advice Line for one hour. Providing and listening ear and vital support to those who are affected by autism.

£20

Could help pay for a family to attend an advice session. These sessions help families that have reached a crisis point & offer a helping hand to build a stronger future.

£25

May give a sibling of an autistic child the chance to attend a sibling workshop. Sibling workshops allow children to learn more about autism & provide a great opportunity to share their feelings.

£50

Could provide a 1:1 specialist support session to a family with an autistic child. This would help them develop long term coping strategies, improving their day to day lives.

£100

Could fund a 6 week training course for a parent. This course will help families to understand autism, ask questions they may have and meet other parents.

